

Usage Model



Usage Model – Ideal way to spread eLearning investment

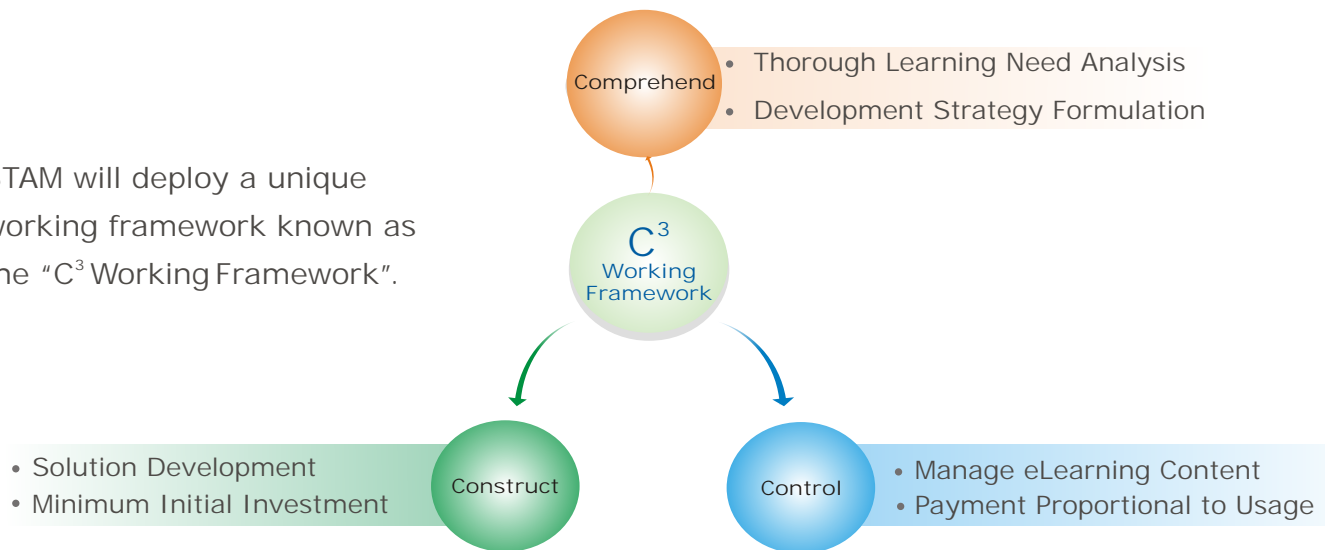
STAM Interactive works with clients in a unique engagement model called as the “Usage Model”. Under the Usage Model, STAM Interactive will execute the engagement in such a way that your investment in eLearning programs is spread over a longer period of time.

Key Highlights of Usage Model


- Minimal Initial Development Cost
- Billing proportional to the usage – Make your \$\$\$ go further
- Low Delivery Times
- Reduced Time to Market
- eLearning Investment spread over years
- Flexibility to build long standing relationships
- Comprehensive eLearning content management
- Thorough learning effectiveness analysis
- Periodic report generation
- Dedicated team for eLearning content management
- ISO standard delivery processes

C³ Working Framework

STAM will deploy a unique working framework known as the “C³ Working Framework”.




Comprehend




STAM will conduct a thorough Learning need analysis and comprehend the actual learning requirements of the client. For this purpose, STAM will engage a dedicated team of “learning experts” who will engage your team in exhaustive discussions. In addition requirement analysis questionnaires will be used to capture the high level business objectives, the intended learning outcomes, information about the target audience, the level of assessment to be used and most importantly: the number of learners and their geographical placement.

Construct



The artifacts of the Comprehend phase will be used to Construct a learning solution to accomplish the intended objectives. During this phase STAM will extensively leverage the experience of developing interactive and effective learning solutions for global clients. All the development work will be carried out at our ISO certified Advanced Development Center. The investment from your end will be very minimal covering certain basic expenses.

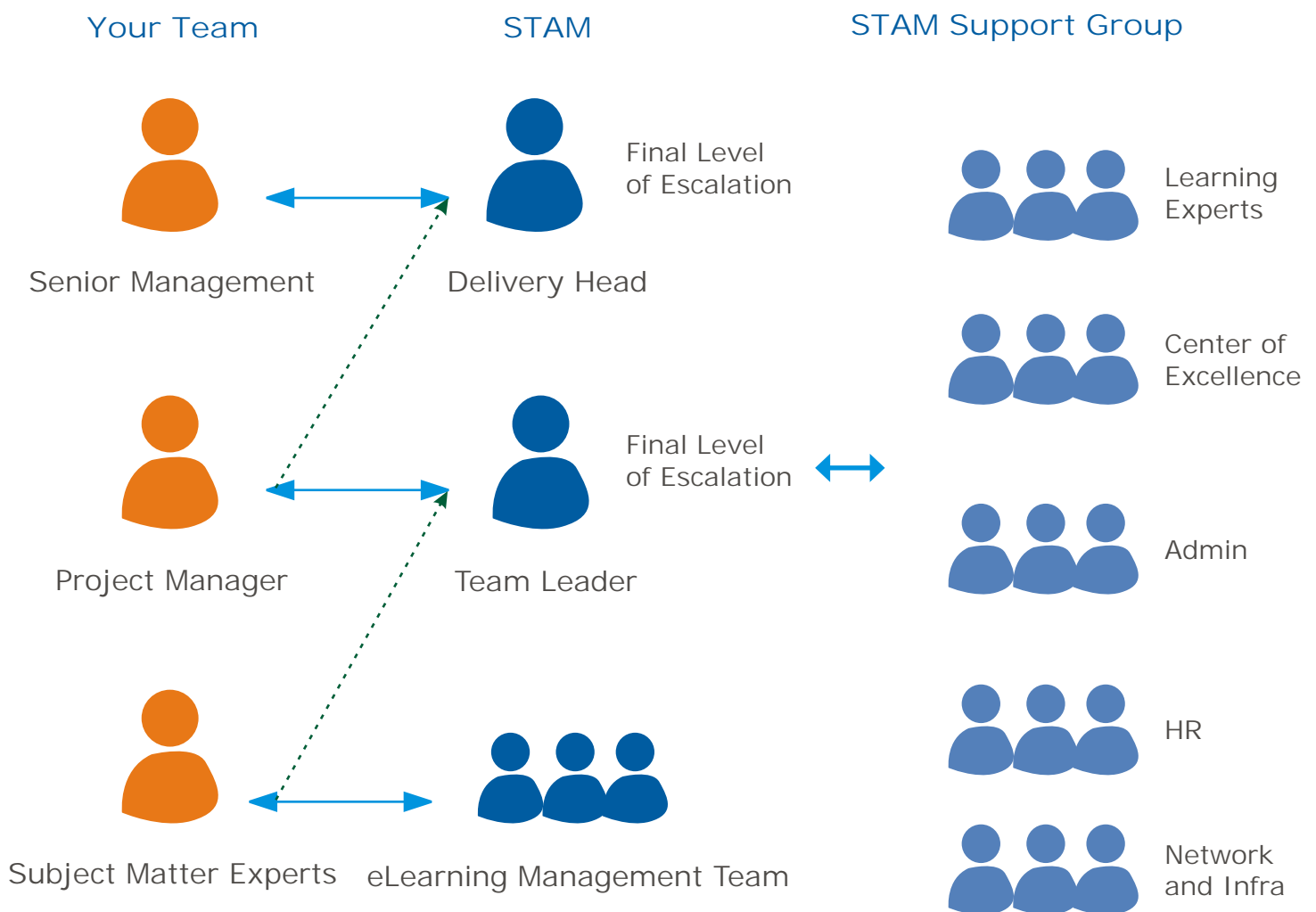
Control



The Control phase involves a comprehensive eLearning content management program. During this phase, STAM will develop a dedicated Learning Management System for your organization. STAM will then manage the entire eLearning content including managing test results, periodic report generation, upgrading the course with new content, Certification management and so on.

Engagement Management

STAM will engage a dedicated team at our ADC campus in India headed by a team leader. The TL will be responsible for day to day monitoring of the team activities and interfacing with your team and project manager. The TL will be under the supervision of the Delivery Head who will act as a second level of escalation. The billing will be proportional to the number of learners. STAM will get into an agreement on the maximum number of learners prior to the start of Development. Any increase in the number of learners will be discussed with your organization.





STAM Interactive Solutions

16 Wright Place Princeton Junction, NJ 08550

Office: 609 750-9827

Toll Free: 1.888.834.STAM (7826) Ext. 1

Fax: 609 750-1936

Advanced Development Center

Bindu Enclave 6-3-903/8/C, Suryanagar Colony, Street No. 10,

Somajiguda, Hyderabad, India

Tel. No: 91 - 40 - 6557 6283